

University Corporate Park

10770 North 46th St. Tampa, FL

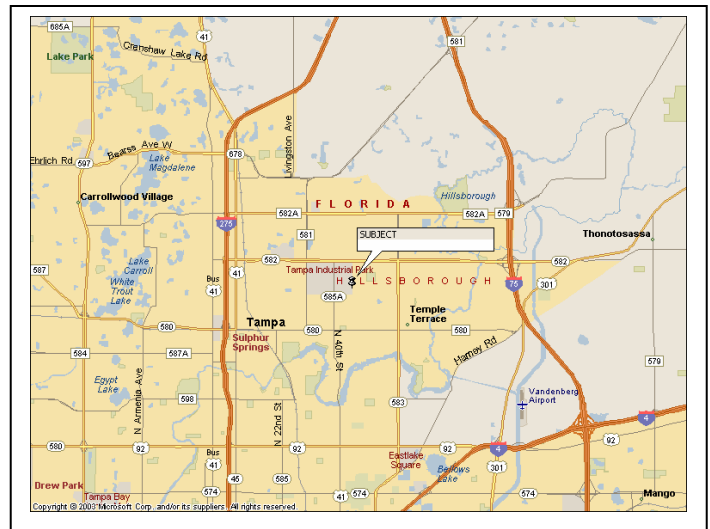


120,000 SF of new office/flex space available in March 2008

Office Space Available

In the University/I-75 Submarket

- Three buildings: 47,000 SF, 47,636 SF and 36,858 SF
- 14' clear ceiling
- Column spacing 30' x 30'
- Rear entry overhead doors
- Building depth 90'
- Divisible to a minimum of 2,500 SF
- Easy access to USF, I-75 & I-275
- \$11.00/SF NNN



FOR LEASE

COLLIERS
ARNOLD

Colliers Arnold Commercial Real Estate Services
4350 W. Cypress St. Suite 300 Tampa, FL 33607
Tel: 813.221.2290 Fax: 813.224.9403
www.colliersarnold.com

Mary Clare Codd Senior Office/Industrial
Specialist
mcodd@colliersarnold.com

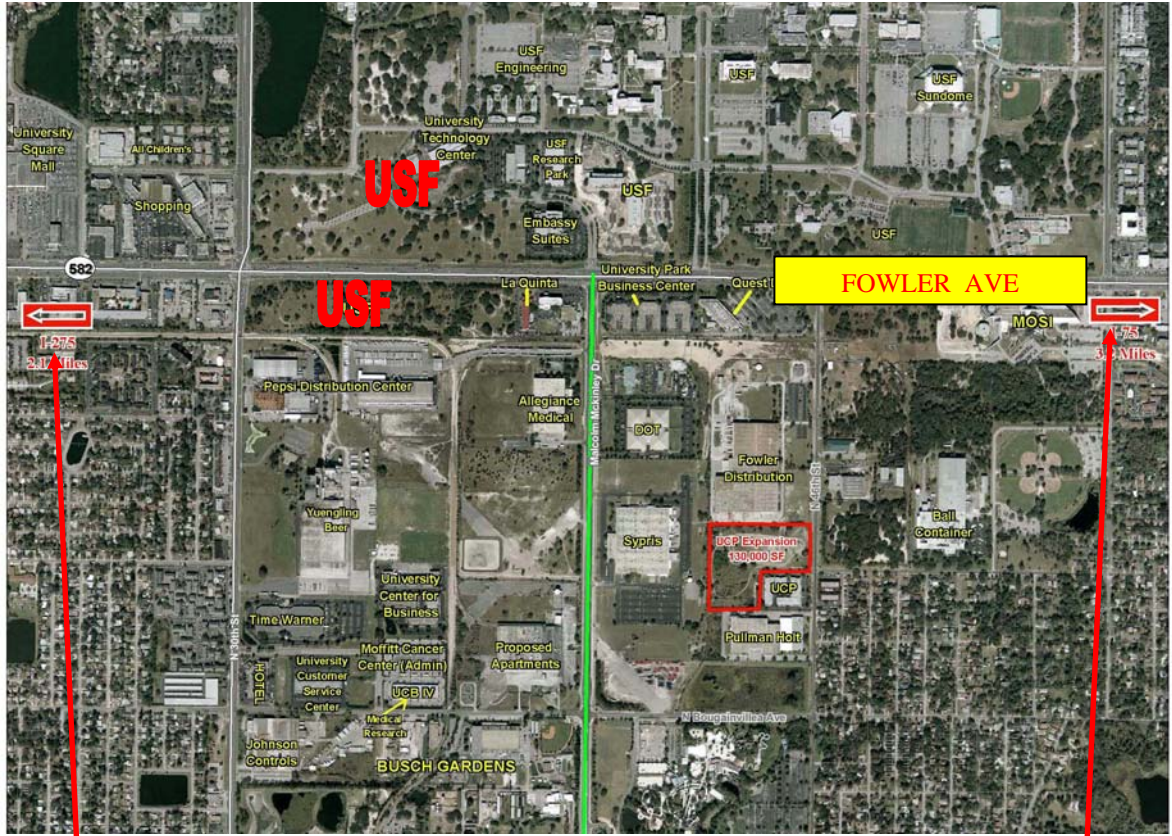
Sales & Leasing | Investment | Property Management | Site Selection | Valuation | Consulting

Information contained herein has been obtained from the owners or from other sources deemed reliable. We have no reason to doubt its accuracy but regret we cannot guarantee it. All properties subject to change or withdrawal without notice.

University Corporate Park

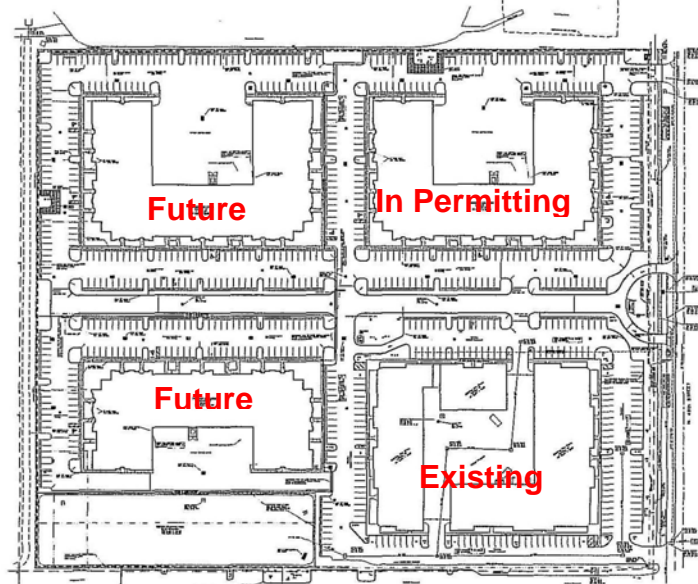
10770 North 46th St. Tampa, FL

FOR LEASE



2.1 Miles to I-275

3.2 miles to I-75



**COLLIERS
ARNOLD**

Colliers Arnold Commercial Real Estate Services
4350 W. Cypress St. Suite 300 Tampa, FL 33607
Tel: 813.221.2290 Fax: 813.224.9403
www.colliersarnold.com

Mary Clare Codd Senior Office/Industrial Specialist
mcodd@colliersarnold.com

The information herein is provided "ONLY AS AN INTRODUCTION TO THE PROPERTY". All parties interested in purchasing should base their final decision on the results of their own independent inspection of the property. The Owner, Agent and all parties acting on behalf of the Owner or Agent hereby make no representations as to the accuracy or completeness of the information included in this property profile. This information is believed to be accurate; we are not responsible for misstatements of facts, errors or omissions, prior sale, changes of price or withdrawal from the market without notice. 11/15/06